

# BEARING FAILURES CAUSED BY LUBE FAILURE

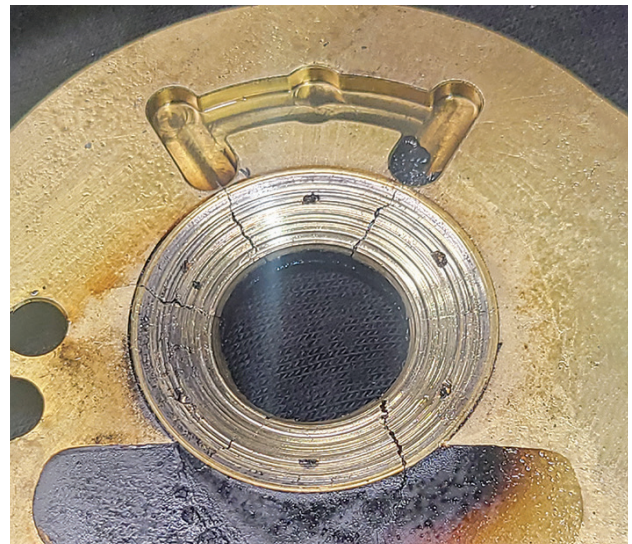
- Turbo bearings don't just fail,
- They are non-contact bearings.
- It is **lubrication issues** that cause the bearings to fail.

## TYPICAL CAUSES OF TURBOCHARGER BEARING FAILURE/LUBE FAILURE:

Delayed Oil, Low Oil Pressure  
or Restricted Oil Flow.



Contaminates  
in Oil



**RECOMMENDATIONS  
TO DO:**

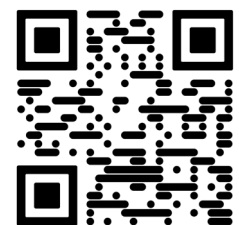


- Change Oil and Filter
- Prime Oil system up to Turbo

**TECH SERVICE HOT LINE**

**Call (844) 476-8500**

8:00 AM – 6:00 PM EST



Use camera to  
scan for more info